

MINERAL SUPPLY CHAINS



© opia, istock

A number of governments have started to promote and implement regulations that require companies to analyse and manage environmental, social and human rights risks in their supply chains. At the same time, companies around the world are increasingly taking responsibility and proactively ensuring the development of responsible sourcing strategies. These efforts include their mineral supply chains, which are often long, opaque and risky as mining often takes place in countries with weak governance.

We integrate the perspectives of companies, governments and international organisations to build responsible, sustainable and diversified mineral supply chains. Drawing on our extensive experience and in-depth knowledge of the upstream extractives supply chain and our proven success in pioneer-

ing initiatives that create responsible mineral value chains from mine to market, we bridge the values and motivations of stakeholders along the supply chain to foster meaningful connections and business partnerships.

Find out more about the services we offer in these areas:

Responsible sourcing: How we support companies, governments and donor organisations in the strategic and technical implementation of responsible mineral supply chains.

Linking actors along the supply chain: How we support links between responsible mining and processing operations with mid- and downstream actors, and build traceable value chains that enable better trading, working and living conditions.

Mineral Supply Chains

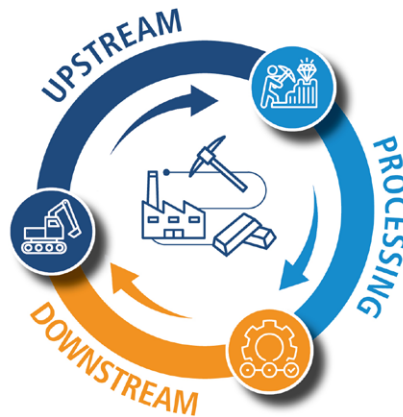
MINING EXPERTISE

We bring an in-depth understanding of the global mining industry, gained by working in over 50 countries.



LINKING ACTORS ALONG THE SUPPLY CHAIN

We connect key players across the mineral supply chain, from extraction to end markets.



PUBLIC PRIVATE PARTNERSHIPS

We have a track record of developing innovative multi-stakeholder initiatives focused on impact on the ground.



INTERNATIONAL STANDARDS

We align our work with international due diligence frameworks and sustainability standards.



ESG RISKS

We provide client-specific analysis of raw material supply chains for informed decision-making.



© Projekt-Consult GmbH

RESPONSIBLE SOURCING

Responsible sourcing of minerals is critical for corporate decision-makers in general management, procurement, and sustainability to build resilient supply chains. By anticipating trends in mineral supply and adapting management systems, companies can effectively navigate the complex landscape of environmental and human rights regulations, meet investor expectations, secure financial resources, and maintain business continuity.

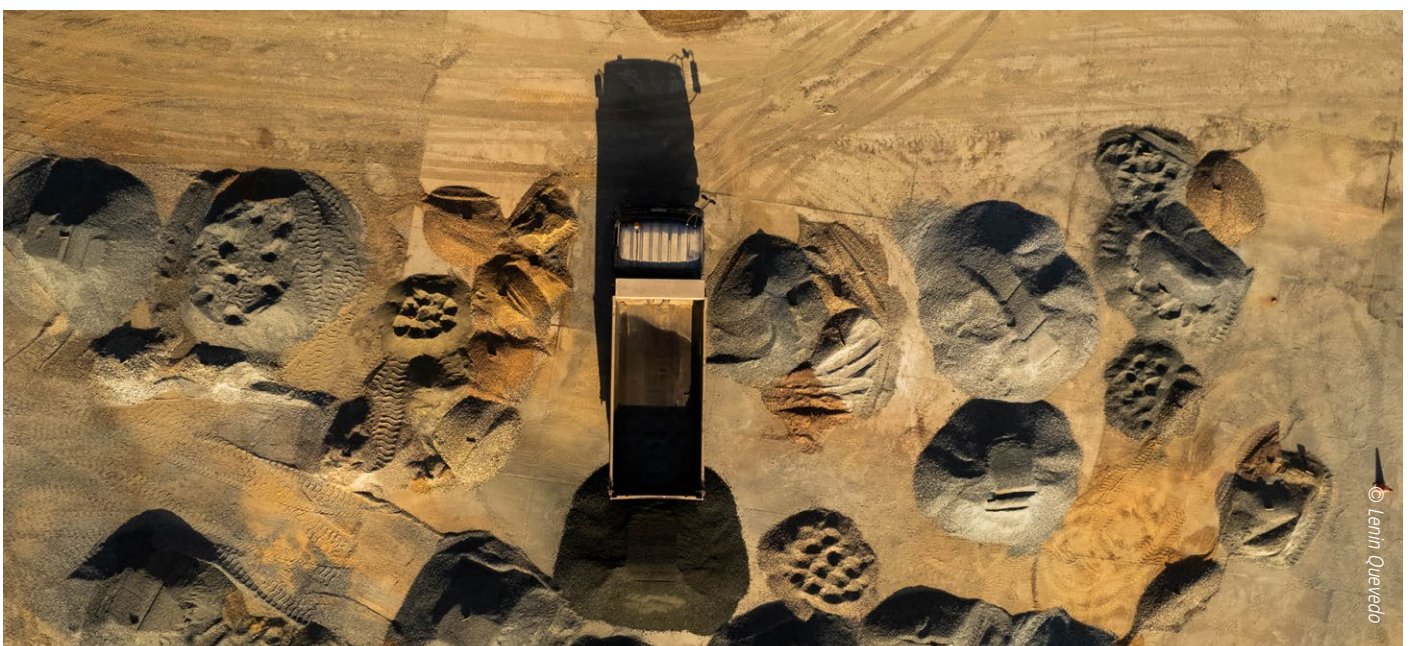
For governments in both, producing and importing countries, responsible sourcing is a key factor in balancing economic growth with ethical, environmental, and social responsibility. This approach ensures long-term benefits for communities, improving conditions in mining areas and along mineral supply chains. It includes considerations of human rights protection, environmental sustainability, economic stability, geopolitical security and compliance with international standards. International organisations have therefore included the topic in their programming to support economic development of mineral-rich countries in the global south.

Projekt-Consult helps to:

- Develop and implement effective responsible sourcing approaches, adapted to specific ESG risks and supply chain analyses, capitalising on existing initiatives and standards.
- Develop policy and regulatory frameworks and establish an enabling environment for responsible mineral sourcing.

- **Mineral supply chain risk-based due diligence:** Projekt-Consult assists companies in implementing due diligence frameworks to effectively assess and address actual and potential negative impacts in their operations, mineral supply chains and business relationships. Among other examples, Projekt-Consult has worked with various OEMs to design an on-the-ground project to prevent and mitigate key risks associated with the mining and processing of a specific mineral in a specific country. We have also developed a methodology for measuring the effectiveness and impact of human rights due diligence efforts and provided guidance on its application.

- **Integration of ESG criteria in purchasing processes:** We support private and public purchasing departments with the analysis of material risks to support informed decision-making and ensure legal compliance, and the development of tailored, effective risk response measures, emphasising tracking and impact assessment through a stakeholder-inclusive approach. For example, in a project funded by the German Federal Ministry for Economic Cooperation and Development, we provided valuable support to German municipalities in mapping supply chains, conducting risk analyses and embedding sustainability considerations into the procurement processes for municipal commercial vehicles.
- **Conduct ESG training at the mine level:** Projekt-Consult has an extensive track record in providing capacity-building measures that are tailored to the specific needs, skill levels, and unique conditions of the target groups, especially in artisanal and small-scale mining (ASM). These programmes encompass both technical competencies and business and management skills development. In more than 50 countries our expert teams have been training miners, mine managers, and mining associations in various practical and more theoretical ESG subjects, including optimised and environmentally clean mining and processing techniques, occupational health and safety (OHS), environmental impact awareness, human rights, trade chain from mine to market, operational management, due diligence & responsible mining and sourcing practice.
- **Conduct mine site audits:** Projekt-Consult's experts have conducted numerous independent third-party audits, particularly in artisanal and small-scale mining (ASM). These audits evaluate the alignment of mining operations with specific and global standards and best practices for responsible mining. They also provide tailored recommendations to help companies monitor and ensure compliance. Key issues assessed include traceability, legality and responsibility, social and labour standards, OHS, community relations, environmental management and closure planning. Through its work, Projekt-Consult has also contributed to the development of mining standards and certifications. Notably, we have supported the German Geological Survey (BGR) in developing the Certified Trading Chains (CTC) standard for 3TG (tantalum, tin, tungsten, gold) minerals in Rwanda and the Democratic Republic of Congo (DRC). This certification has since become a national standard for conflict minerals in the DRC.
- **Responsible sourcing policies and legislation:** Projekt-Consult has supported and advised more than 50 mining countries in the development of appropriate strategic, policy and regulatory frameworks, thereby improving the conditions for responsible mineral production and contributing to the long-term security and sustainability of the mineral sectors. For example, Projekt-Consult successfully assisted the governments of Uzbekistan and Ukraine in drafting and optimising their subsoil legislation, to develop a more competitive and responsible mining sector.
- **Setting standards for mining and mineral sourcing:** Projekt-Consult has been participating in a multitude of international policy fora for developing standards and guidelines for responsible mining and sourcing. Our staff has advised the International Labour Organisation (ILO) on child labour in mining and participated in the working group of the OECD for drafting the Due Diligence Guidance for Responsible Supply Chains of Minerals from Conflict Affected and High-Risk Areas.



© Lenin Quevedo

LINKING ACTORS ALONG THE SUPPLY CHAIN

Often, the corporate perspective on supply chain engagement is compliance-driven. However, there are numerous opportunities to engage seriously with suppliers, especially in high-risk and opaque supply chains. We have seen in many cases that strategically linking actors across the minerals value chain is essential to promote sustainable development, drive business growth and improve the overall efficiency of the sector by unlocking business potential, addressing information asymmetries, leveraging synergies and promoting social and environmental responsibility. In doing so, successful strategies not only ensure compliance, but also facilitate access to strategic raw materials as well as investment capital, and bring reputational benefits by demonstrating a commitment to improving the living and working conditions of people in mining communities.

Projekt-Consult helps to:

- Connect upstream and downstream actors, linking supply and demand for responsible minerals.
- Engage downstream companies to create a positive impact on the ground in producing countries.

Projekt-Consult has effectively built networks to enhance business opportunities in the sector and facilitated the establishment of innovative partnerships from mine to market. Our services include:

- **Connecting partners along the supply chain:** We partner with companies, industry associations, and research institutions to bridge gaps in international mineral supply chains. For example, we have created a unique platform for knowledge exchange, which included series of events to bring together hundreds of stakeholders from the mining (tech) sector in Europe and Latin America, both digitally and in person.
- **Establishing public-private partnerships:** Projekt-Consult has successfully developed mineral value chains from mine to market, connecting the stakeholders around core principles such as responsible production, traceability, transparency, better trading conditions, and creating positive impacts for mining communities. The success of initiatives such as Swiss Better Gold has served as a model, inspiring other projects to establish responsible mineral value chains.
- **Promoting sourcing from responsible ASM:** Projekt-Consult has effectively leveraged multi-stakeholder interaction spaces to promote responsible mining practices and increase the commitment of downstream actors to responsible mineral sourcing. We facilitate access to international mineral markets and the establishment of traceable supply chains. For example, we have promoted responsible sourcing in the United States for Colombia's artisanal and small-scale mining (ASM) sector through the USAID-funded Tierra Dorada Project.
- **Establishing a competitive business environment:** We promote business opportunities and regional harmonisation of legal frameworks, establish public business services, set incentive frameworks and help to reduce administrative barriers. We have also set up networks, platforms and trade shows of mining sector stakeholders to promote exchange of experiences, cross-learning and business opportunities between countries and regions.
- **Empowering mining communities:** Recognising the power of communities and various civil society organisations active in the mining sector and their role as accountability actors, we have contributed to their empowerment, in particular through training on mineral governance, including transparency, gender-sensitivity and effective community-based monitoring. Often, these groups are important stakeholders in interventions, but Projekt-Consult has also conducted projects specifically addressing CSO and community empowerment, e.g., in Côte d'Ivoire and Liberia.

CONTACT

Projekt-Consult GmbH ▪ Eulenkurgstraße 82 ▪ 22359 Hamburg, Germany ▪ phone: +49 40 603 06 0 ▪ e-mail: info@projekt-consult.de
www.projekt-consult.de