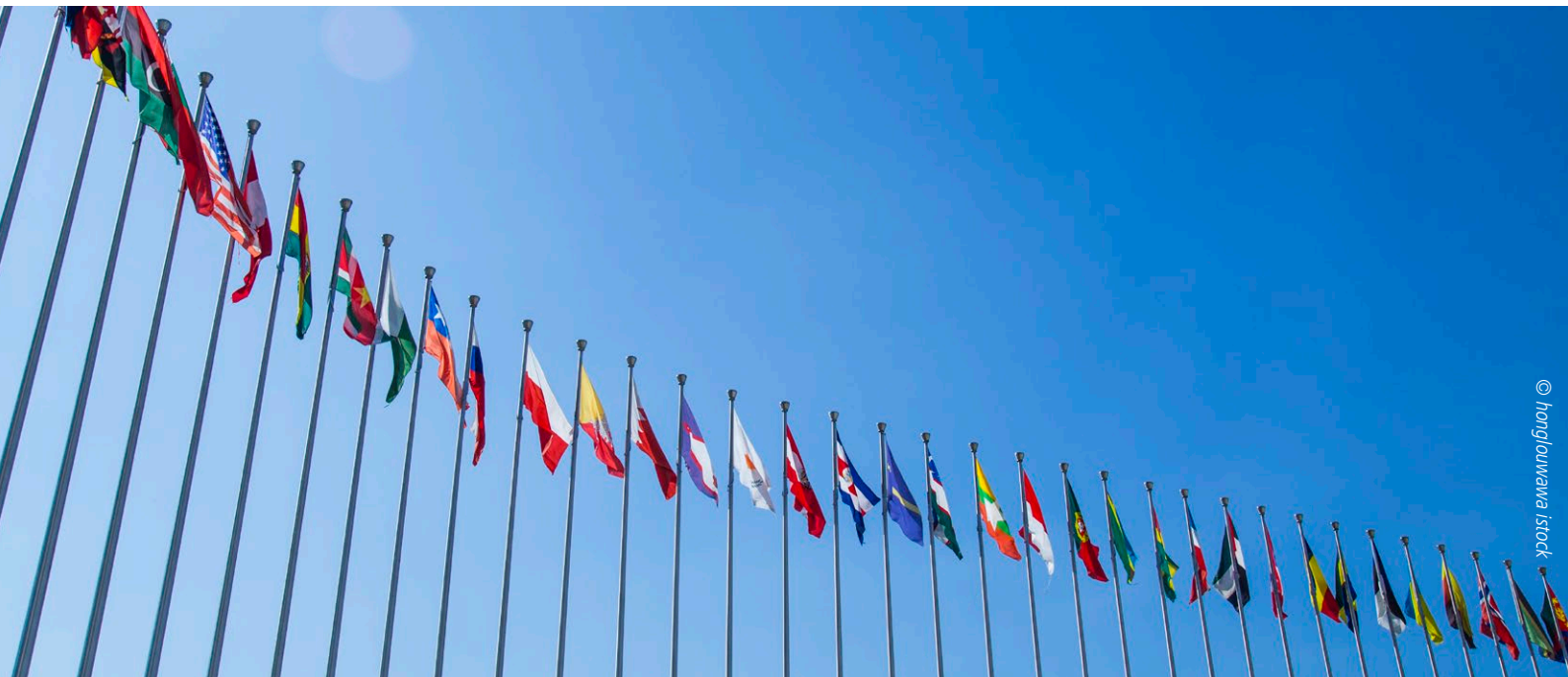


RAW MATERIAL POLICY



© hongluwawa stock

The concept of critical raw materials reflects a shift in international raw material policy for both importing and producing countries. Europe, in particular, seeks to diversify its supply chains in order to achieve supply security, while producing countries expect to benefit more from raw material demand, creating new international cooperation opportunities.

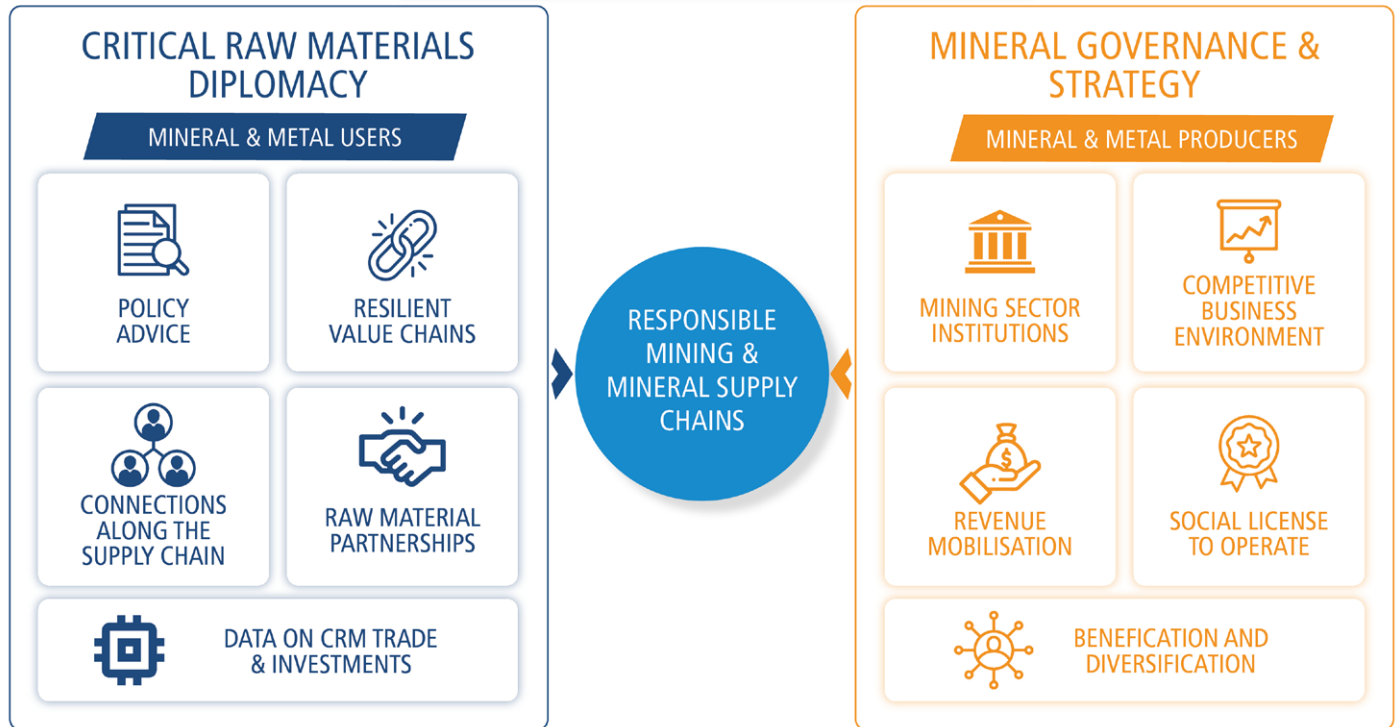
For many years, we have combined both perspectives in complex research and advisory processes - always with a holistic view on economic, environmental, social and governance conditions.

Find out more about the services we offer in these areas:

Critical raw material diplomacy: How we support mineral and metal users to combine supply security with sustainability goals.

Mineral governance and strategy: How we support producing countries to develop their mining sectors responsibly.

Raw Material Policy



© Projekt-Consult GmbH

CRITICAL RAW MATERIAL DIPLOMACY

Reliable access to Critical Raw Materials (CRM) is central for countries' economic development and as a part of green technologies to achieving ambitious sustainability goals, such as carbon neutrality. As a result, global competition for access to and control over CRM value chains is intensifying. This raises the question of how demand countries can become and remain attractive and credible partners for mineral-rich supply countries.

Development banks and international donor institutions have a long history of improving conditions in mining communities and along mineral supply chains through technical assistance projects. New progressive supply chain legislation is also an expression of how countries are taking responsibility beyond their borders. For successful raw material diplomacy, it is important to combine this experience as a credible partner in achieving environmental, social and governance (ESG) goals with the need to build new relationships and supply chains, particularly from countries that produce CRMs.

Projekt-Consult helps to:

- Connect partners from mineral producing and consuming countries.
- Combine supply security with responsible mineral sourcing.

We have worked on innovative policy approaches and concrete technical solutions for responsible raw materials management in more than 60 countries.

This includes:

- **Designing tools for CRM policy analysis:** Our studies and projects, deal with trade and investment data, material flows and production conditions in mining and develop analytical tools for policy makers. For example, we have analysed and quantified the ecological footprint of more than fifty raw materials to show that criticality has more than just an economic dimension.
- **Resilient value chains:** Projekt-Consult conducts research and advisory projects for governments interested in understanding the reality of the extractive sector in emerging and developing countries. This includes advising governments and regional organisations on the long-term security and sustainability of the raw material sector and developing strategies for responsible mineral production and supply – for example in the strategic dialogue on sustainable raw materials.
- **Implementing the EU Raw Materials Strategy:** We help institutions in Europe to translate the political goal of supply diversification into concrete actions in their partner countries. Projekt-Consult helped establish one of the first Partnerships on CRMs in the EU and Ukraine, demonstrating the potential for investment - and the ESG barriers that need to be addressed.
- **Connecting partners along the supply chain:** We partner with companies, industry associations, and research institutions to bridge gaps in international mineral supply chains. For example, we have created a unique platform for knowledge exchange which included series of events to bring together hundreds of stakeholders from the mining (tech) sector in Europe and Latin America, both digitally and in person.
- **Analysing Data on CRM demand and supply:** We have analysed the demand, requirements and production conditions of many key CRMs, such as copper, nickel, tungsten, tantalum and tin, to provide data-based recommendations for a national CRM strategy, for example in Indonesia.



© iStock, SeventyFour

MINERAL GOVERNANCE AND STRATEGY

Economies and societies can better benefit from their mineral wealth by establishing the right framework conditions to attract suitable investors. Effective mining governance is essential to ensure that mining activities not only proceed efficiently but also earn the trust and support of local communities. The lack of good governance is a key issue in many countries that have suffered from extractivism in recent decades. Long-term strategies, credible legislation, readily available geospatial data and, above all, strong institutions are needed to develop the mining sector successfully and responsibly. In addition, for countries that want to harness the powerful potential of mining for inclusive economic development, it is essential to add domestic value to mining products and to embed mining operations in local and regional economic contexts.

Projekt-Consult helps to:

- Develop policy and regulatory frameworks for responsible mining.
- Create value addition beyond extraction.

Projekt-Consult has decades of experience from advisory projects in more than fifty mining countries. This has helped us to develop adequate strategic, policy and legal frameworks as a premise for long-term and sustainable mining sector growth at all levels – from large-scale to artisanal and small-scale mining.

This includes:

- **Strengthening mining sector institutions:** Our interdisciplinary team focuses not only on mining and other sector ministries, but also on regional development agencies, geological surveys, mining and environmental departments and inspection services at the national and sub-national levels. This scope includes regulatory, normative and control functions of public institutions and their coordination in order to embed the mining sector into overall national development. For example, we have supported environmental protection agencies in many African countries, enabling them to better fulfil their oversight mandate of the mining sector.
- **Revenue mobilisation:** We assist ministries of finance and tax authorities in reviewing their fiscal regimes and defining appropriate tax incentives to ensure a fair share of benefits from the mining sector, for example in past projects in Uzbekistan. We also have experience in analysing illicit financial flows in order to detect money laundering or terrorism financing, which is particularly prevalent in the artisanal and small-scale mining (ASM) sector. We have assessed such risks, for example in the Ivorian mining sector.
- **Establishing a competitive business environment:** We promote business opportunities and regional harmonisation of legal frameworks, establish public business services, set incentive frameworks and reduce administrative barriers. We have also set up networks, platforms and trade shows of mining sector stakeholders to promote exchange of experiences, cross-learning and business opportunities between countries and regions as seen in a regional project in Latin America.
- **Empowering mining communities:** Recognising the power of communities and various civil society organisations active in the mining sector and their role as accountability actors, we have contributed to their empowerment, in particular through training on mineral governance, including transparency, gender issues and effective community-based monitoring. Often these groups are important stakeholders in interventions, but Projekt-Consult has also conducted projects specifically addressed to CSOs and communities in Côte d'Ivoire and Liberia.
- **Beneficiation and diversification:** We support the elaboration of national strategies to promote local content in the mining sector, and help develop domestic value chains and linkages between local companies and mining operators. Our services range from collection and analysis of data on local suppliers, sub-contractors and potential economic niches in mining areas, to access to finance and support for domestic mineral processing – for example in Ghana and Nigeria.

CONTACT

Projekt-Consult GmbH ▪ Eulenkurgstraße 82 ▪ 22359 Hamburg Germany ▪ phone: +49 40 603 06 0 ▪ e-mail: info@projekt-consult.de
www.projekt-consult.de